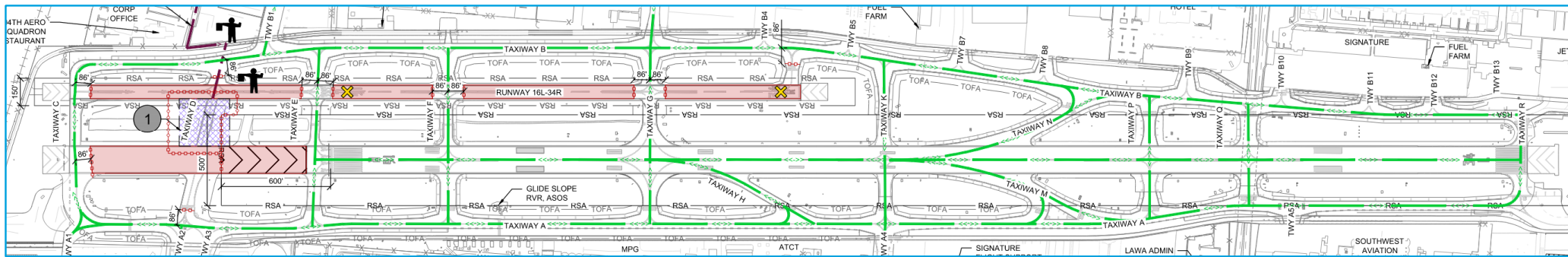


Phase 1 – Taxiway D Reconstruction (Including Pavement Test Sections) 61 Calendar Days, February 11 to April 12



Runway 16R-34L Declared Distances

	RWY 16R		RWY 34L	
	Existing	Proposed	Existing	Proposed
TODA				
TORA	8,001'	6,701'	8,001'	6,327'
ASDA				
LDA	6,570'	6,568'	7,261'	6,168'

Construction Phase Notes

Construction

1. Work Hours: Daytime, Minimum 10-hr shifts.
2. Work Days: Monday thru Saturday
3. Duration: 61 calendar days.
4. Other Criteria: Test section completed within 25 calendar days

Airfield Operations

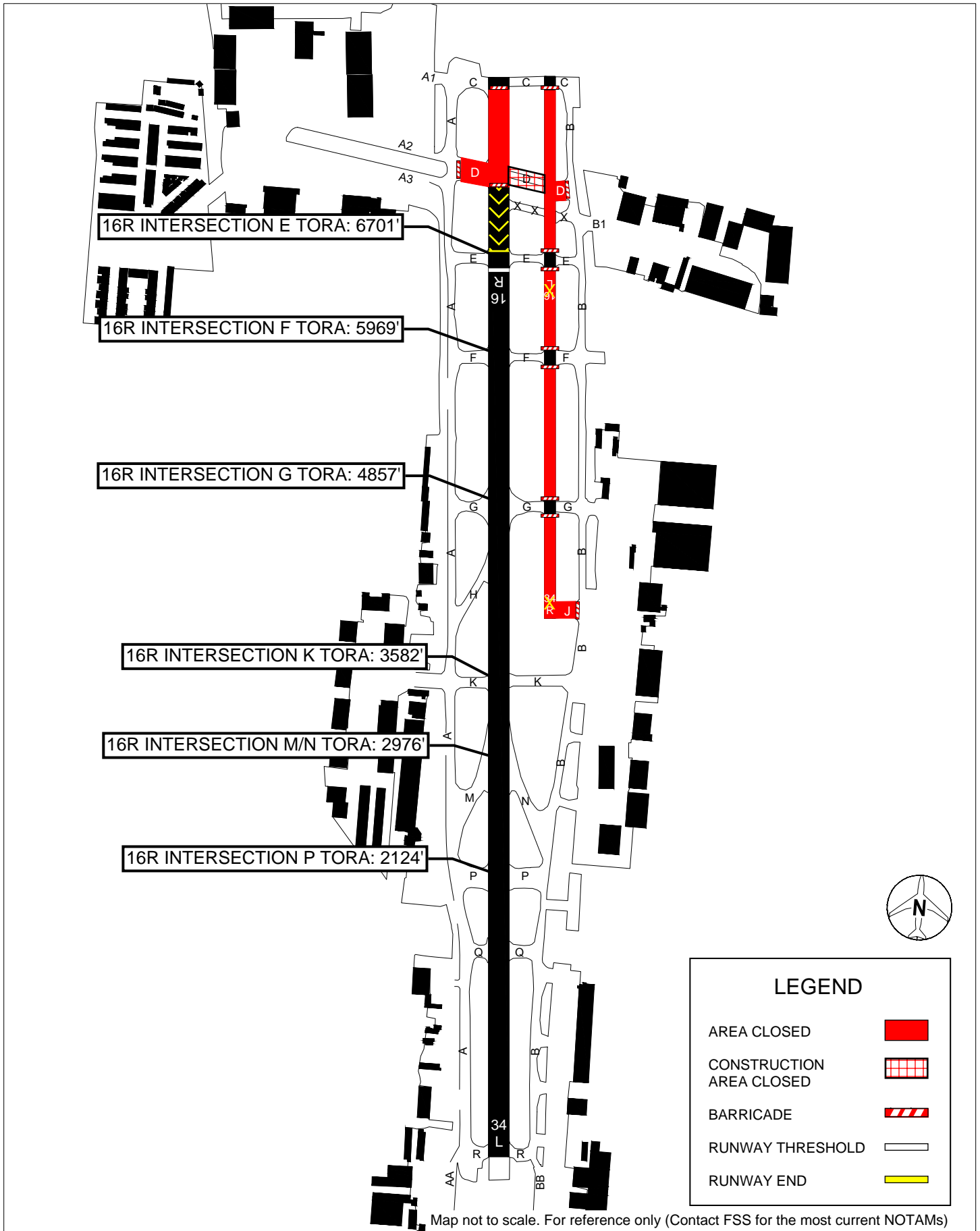
1. Runway 16L-34R – Closed
2. Runway 16R-34L – Shortened, 16R ILS Not Available
3. Taxiway D – Closed
4. Taxiway C and Taxiway A north of Taxiway A2
 1. Height restrictions 0600 to 2245
 2. Closed 2245 to 0600

VNY AIRPORT

RWY 16R Shortened Declared Dista

Construction Phase 1 and 2A (Est. 2/11/25 to 4/17/25)

Current as of: 3/25/25



16R INTERSECTION E TORA: 6701'

16R INTERSECTION F TORA: 5969'

16R INTERSECTION G TORA: 4857'

16R INTERSECTION K TORA: 3582'

16R INTERSECTION M/N TORA: 2976'

16R INTERSECTION P TORA: 2124'

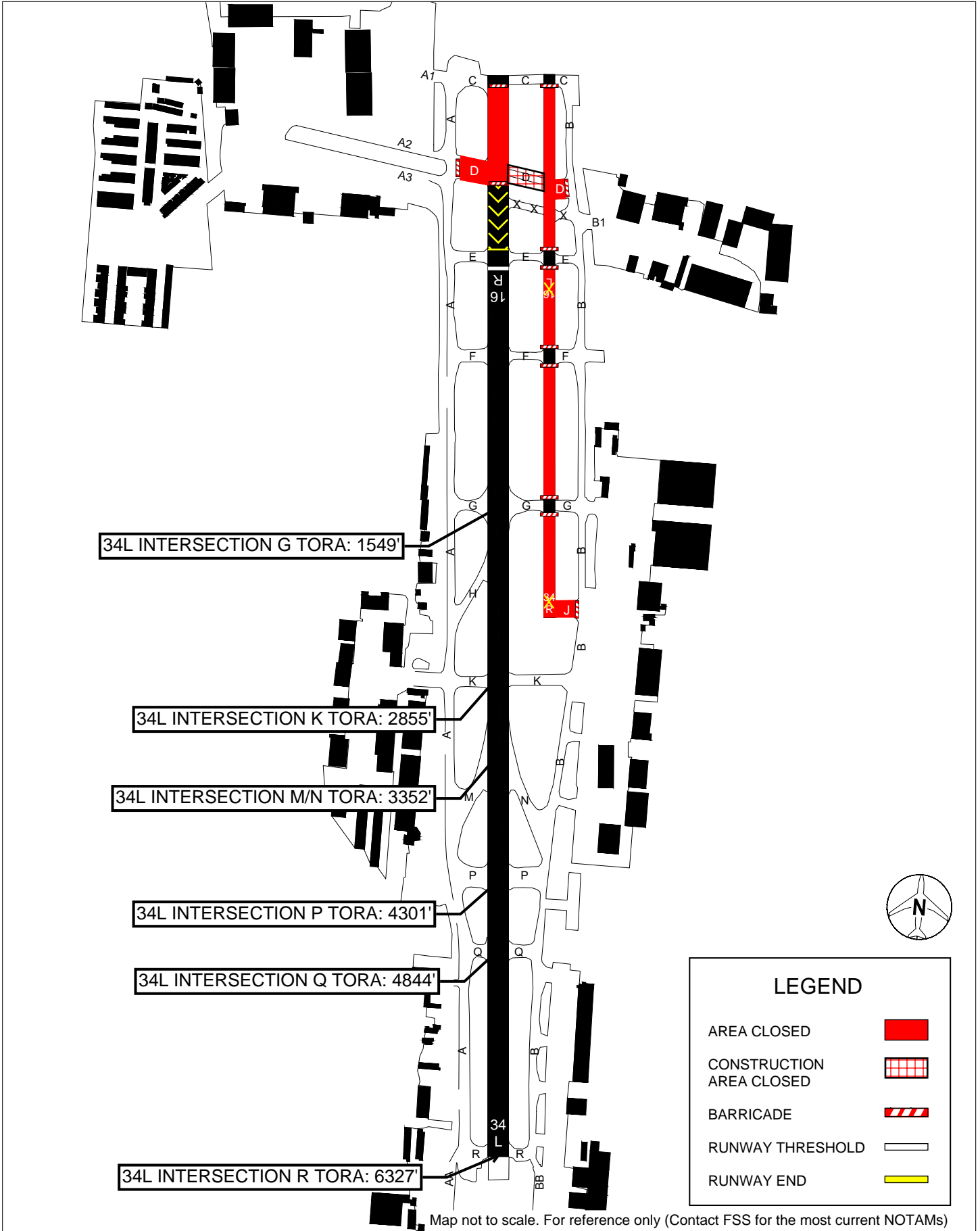
Map not to scale. For reference only (Contact FSS for the most current NOTAMs)

VNY AIRPORT

RWY 34L Shortened Declared Distances

Construction Phase 1 and 2A (Est. 2/11/25 to 4/17/25)

Current as of: 3/25/25



Map not to scale. For reference only (Contact FSS for the most current NOTAMs)

AIRCRAFT HEIGHT RESTRICTIONS Rwy 34L Active Configuration (North Flow)

Work Area 1

EARLY-FEBRUARY to MID-APRIL (65 DAYS)

VAN NUYS (VNY)
VAN NUYS, CALIFORNIA

ATIS 127.55
 VAN NUYS TOWER 239.0
 VAN NUYS (VNY) 121.7
 119.3 (162-345 & DEP RWY 16R-34L)
 120.2 (346-161 & DEP RWY 16L-34R)
 119.0 (HELICOPTERS)
 GND CON 239.0
 CLNC DEL 126.6
 CPDLC 239.0
 PDC

EB HOLD @ VSR MARKING:
Max tail height = 27'

SB HOLD @ ILS MARKING:
Max tail height = 20'

EB HOLD @ ILS MARKING:
Max tail height on Txy A NB = 20'
Max tail height on Txy A SB = 27'

NB HOLD @ TXY A2:
Max tail height on Txy A NB = 20'

HOLD @ 16L MANDATORY STOP:
Max tail height = 27'

WORK AREA LEGEND

- CONSTRUCTION AREA CLOSURE
- AREA CLOSURE
- HEIGHT RESTRICTION 27' MAX TAIL HEIGHT
- HEIGHT RESTRICTION 20' MAX TAIL HEIGHT

WORK AREA 1 SUMMARY

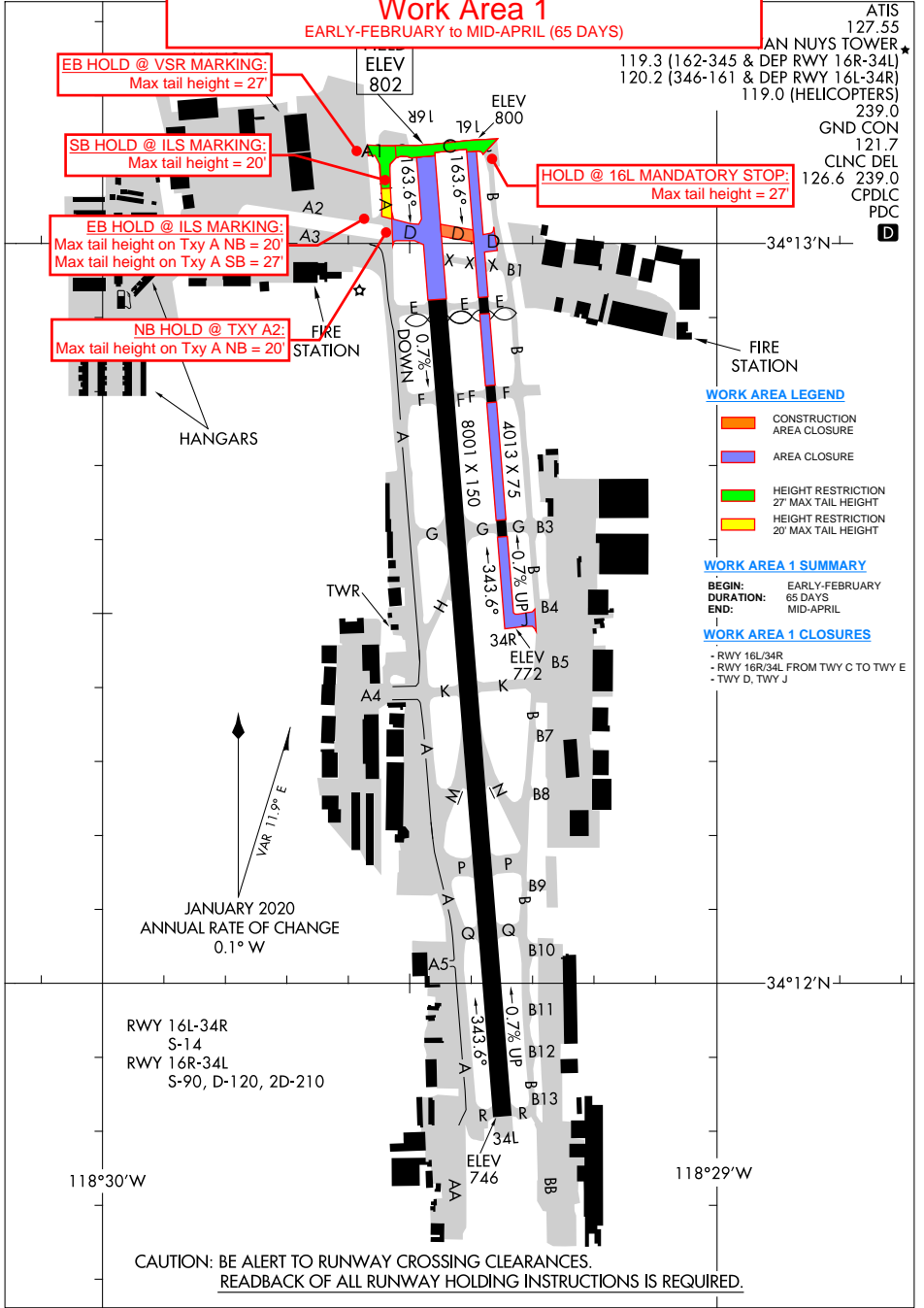
BEGIN: EARLY-FEBRUARY
DURATION: 65 DAYS
END: MID-APRIL

WORK AREA 1 CLOSURES

- RWY 16L/34R
- RWY 16R/34L FROM TWY C TO TWY E
- TWY D, TWY J

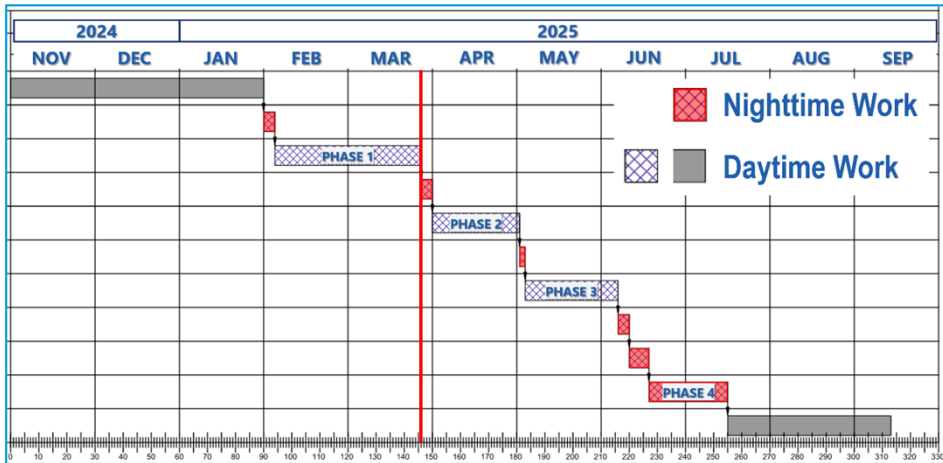
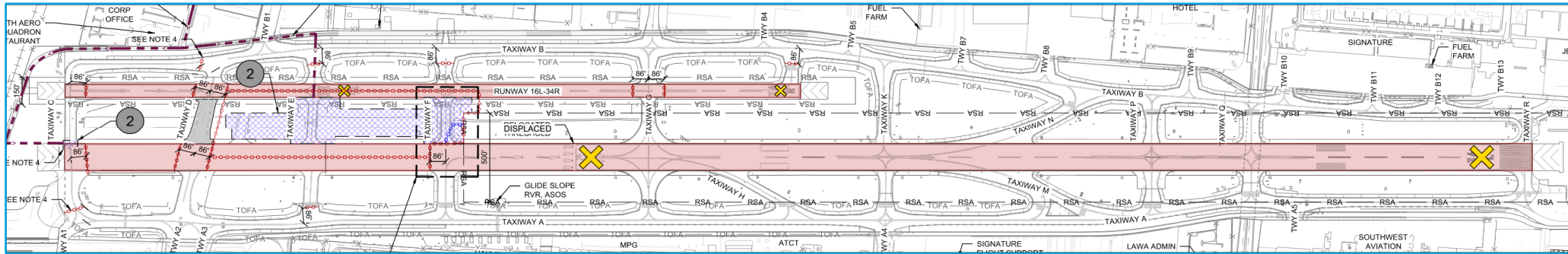
SW-3, 31 OCT 2024 to 28 NOV 2024

SW-3, 31 OCT 2024 to 28 NOV 2024



CAUTION: BE ALERT TO RUNWAY CROSSING CLEARANCES.
READBACK OF ALL RUNWAY HOLDING INSTRUCTIONS IS REQUIRED.

Phase 2A – Phase 2 Pre-Work – Runway 16R Threshold Displacement 4 Calendar Nights, April 13 to April 17



Construction Phase Notes

- Construction**
1. Work Hours: Nighttime 2230 to 0600.
 2. Work Days: Sunday to Thursday.
 3. Duration: 4 consecutive calendar nights.
 4. Other Criteria:
 - a. Runway 16R-34L shall reopen by 0600 at the end of each of the first three nights.
 - b. Runway 16R threshold displacement shall take effect over the final night of the phase.

- Airfield Operations**
1. Runway 16L-34R and 16R-34L – Closed
 2. Various Taxiways on north end – Closed